

# RJ45 Boots

*Protect and organize  
your connectors  
and panels*

**Organize your cables** and protect RJ45 plugs with snagless Cat5e, Cat6, and Cat6A boots.

- Protect the connector
- Prevent tangled messes
- Eliminate broken release/locking tabs
- Relieve stress on cable
- Help maintain radius bend
- Color code designated
- Cover the external ground on shielded connectors



## Application

Max Cable OD:

- 5.5mm / 0.217" (typically for Cat5e)
- 6.0mm / 0.236" (typically for small Cat6)
- 6.5mm / 0.260" (typically for medium Cat6)
- 7.0mm / 0.275" (typically for large Cat6)
- 7.5mm / 0.295" (typically for small Cat6A)
- 8.0mm / 0.314" (typically for medium Cat6A/7)
- 8.5mm / 0.334" (typically for large Cat6A/7)

## Technical Data

- Material: PVC plastic
- Available colors: Black, White, Red, Orange, Blue, Gray, Green, Yellow, Purple

*See reverse for additional information.*

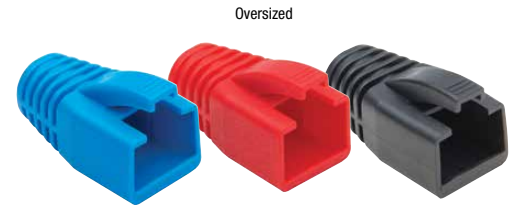
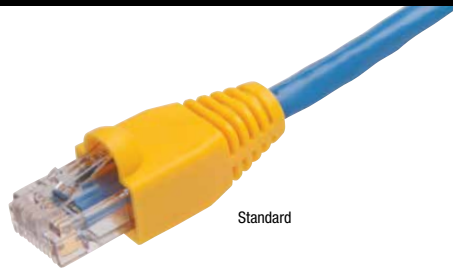
California, USA

Phone: 805.384.2777 / 800.749.5783 • Fax: 800.749.5784

**[www.platinumtools.com](http://www.platinumtools.com)**

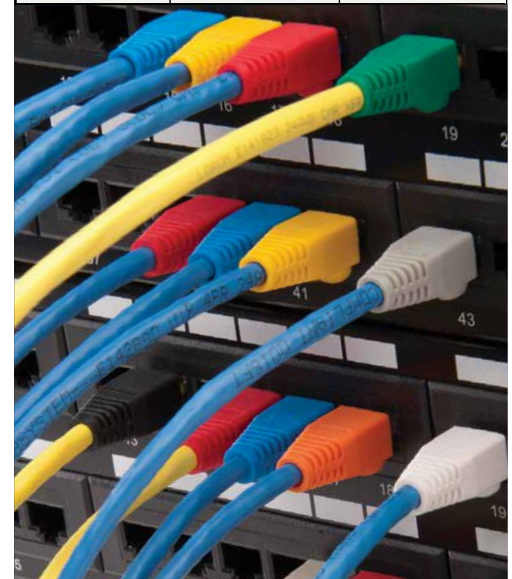
**Available in  
9 Colors!**





Color	Quantity	Standard Cable OD Ranges			
		5.5mm OD (0.217")	6mm OD (0.236")	6.5mm OD (0.260")	7mm OD (0.275")
Red	100/bag	105060	105071	105081	105091
	25/bag	100031R-BG	100032R-BG	100033R-BG	100034R-BG
Blue	100/bag	105061	105072	105082	105092
	25/bag	100031B-BG	100032B-BG	100033B-BG	100034B-BG
Black	100/bag	105062	105073	105083	105093
	25/bag	100031BK-BG	100032BK-BG	100033BK-BG	100034BK-BG
Grey	100/bag	105063	105074	105084	105094
	25/bag	100031GY-BG	100032GY-BG	100033GY-BG	100034GY-BG
Green	100/bag	105064	105075	105085	105095
	25/bag	100031GR-BG	100032GR-BG	100033GR-BG	100034GR-BG
Yellow	100/bag	105065	105076	105086	105096
	25/bag	100031Y-BG	100032Y-BG	100033Y-BG	100034Y-BG
White	100/bag	105066	105077	105087	105097
	25/bag	100031W-BG	100032W-BG	100033W-BG	100034W-BG
Purple	100/bag	105067	105078	105088	105098
	25/bag	100031P-BG	100032P-BG	100033P-BG	100034P-BG
Orange	100/bag	105068	105079	105089	105099
	25/bag	100031O-BG	100032O-BG	100033O-BG	100034O-BG

Oversized Cable OD Ranges		
7.5mm OD (0.295")	8mm OD (0.315")	8.5mm OD (0.335")
105102	105105	105108
100037R-BG	100038R-BG	100039R-BG
105100	105103	105106
100037B-BG	100038B-BG	100039B-BG
105101	105104	105107
100037BK-BG	100038BK-BG	100039BK-BG



These RJ45 Boots work on all Platinum Tools' standard RJ45, EZ-RJ45®, and ezEX-RJ45® connectors.

**Standard RJ45 Connectors (UTP/STP):**

- Cat5e/Cat6/Cat6A

**EZ-RJ45®: Connectors (UTP/STP):**

- Cat5/5e/Cat6

**ezEX-RJ45® Connectors (UTP/STP):**

- ezEX™44 - Cat6 / ezEX™48 - Cat6A

Visit [www.platinumtools.com](http://www.platinumtools.com) to find your Cut, Strip, Terminate, and Test solutions.

California, USA

Phone: 805.384.2777 / 800.749.5783 • Fax: 800.749.5784

[www.platinumtools.com](http://www.platinumtools.com)

**We Make Connections EZ!™**